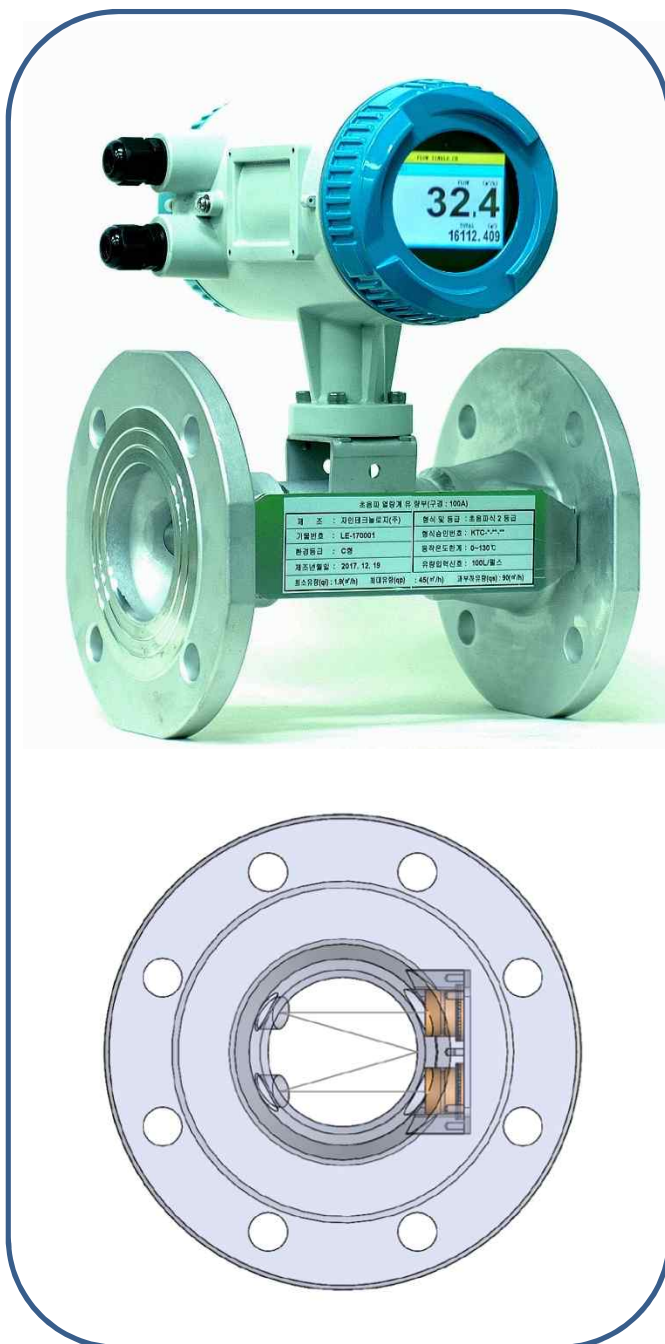


# Energy Meter Xonic® 10LE

Xonic 10LE is insertion ultrasonic flowmeters with 1 path, 2 path, 3 paths spool type. It has no moving parts and fully digitalized with precise temperature sensors. Xonic 10LE can measure clean water, dirty water, chemicals, oil, alcohol, etc, so it can replace conventional flowmeters.



## No Moving Parts

- No Turbine or Impeller
- No Gear Box
- No Magnetic Parts

## Stainless Steel Body

- No Corrosiveness
- No Rust

## Fully Digitalized Water Meter

- Ultrasonic Transit-Time Method
- Bi-Direction Flow
- Empty Alarm
- BTU Flow & Total Volume Flow & Total
- RS-232C/485 Modbus Pulse Output
- 4-20mA Analog Output
- Same Size with Turbine

## Application

- District Heating
- Flow Monitoring Flowmeter
- Flowmeters for
  - Chemical
  - Semiconductor
  - Ship Manufacturing
  - Oil Refinery
  - Irrigation

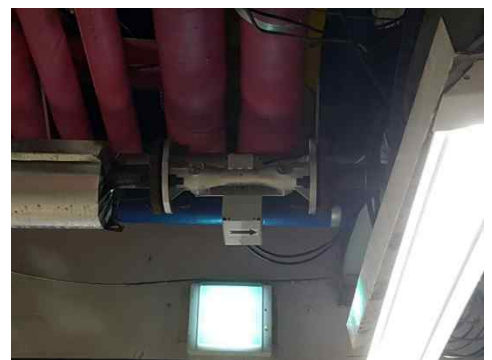
# Energy Meter Xonic® 10LE



## Specifications

**Measuring Method**  
 Ultrasonic Transit-Time  
 1~3 Pair Insertion Transducers  
**Accuracy** : 0.5% RD  
**Measuring Range**  
 0.05~10 m/s (flow velocity)  
 -40 ~ +150 °C (temperature)  
**Sensitivity** : 0.001 m/s  
**Temperature Sensor** : PT500  
**Output** :  
 RS-232C/485, 4-20mA, Relay  
**Display**  
 Flow & Total  
 BTU Flow & Total  
 Graphic Mode (diagnostic)  
 - signal shape, strength, etc  
**Operating Temperature**  
 -20 ~ +60°C for Electronics  
 -40 ~ +120°C for Transducers  
 -100 ~ +150°C for Temperature  
**Datalogger** : 32Mbytes  
**Protection**  
 IP68 for Spool  
 IP65 for Electronics  
**Spool Material**  
 Stainless Steel 304

Flow Range					
NO	size	start flow (q0)	min flow (qi) 50:1	max flow (qp)	over flow (qs)
1	20mm	0.015	0.03	1.5	3
2	25mm	0.07	0.14	7	14
3	40mm	0.1	0.2	10	20
4	50mm	0.15	0.3	15	30
5	65mm	0.25	0.5	25	50
6	80mm	0.45	0.9	45	90
7	100mm	0.7	1.4	70	140
8	125mm	1	2	100	200
9	150mm	1.5	3	150	300
10	200mm	2.5	5	250	500
11	250mm	5	10	500	1000



**Xonic 10LE  
Energy Meter**