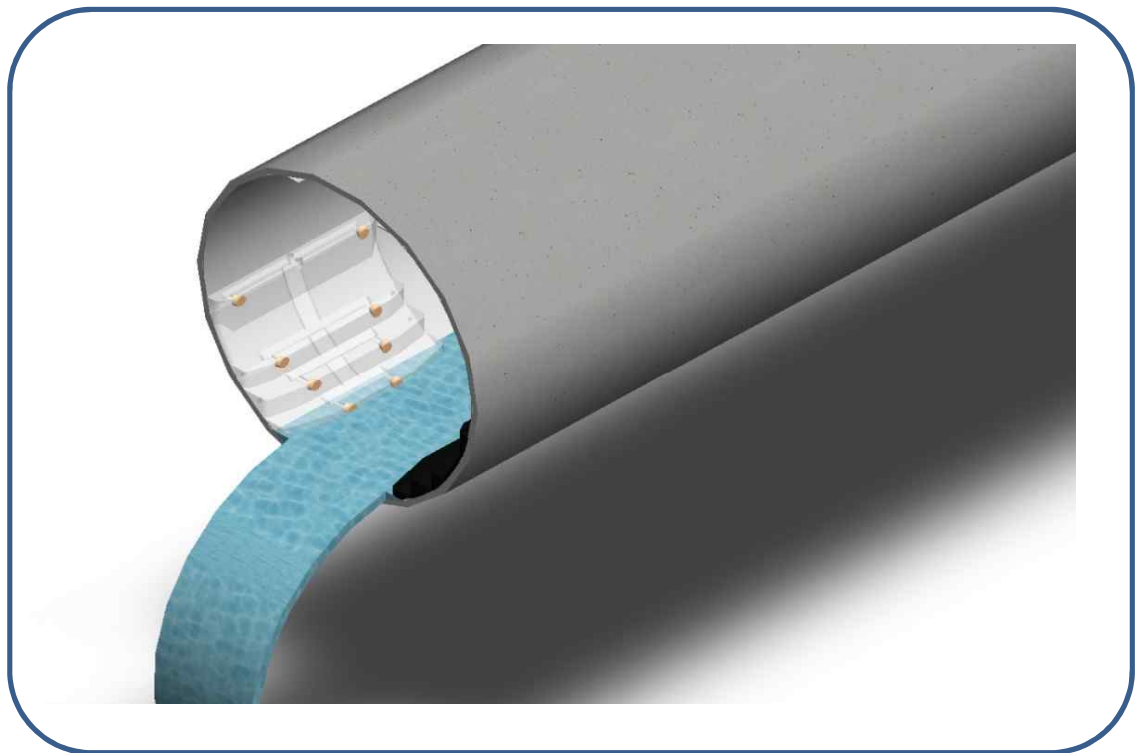


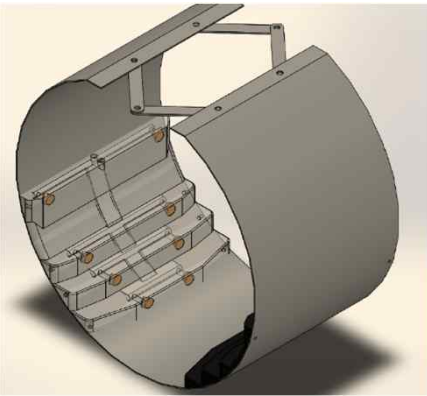
# Ultrasonic Sewage Pipe Flowmeter Xonic<sup>®</sup> 100LO



- ✓ First developed product in the world
- ✓ Design not affected by sludge
- ✓ Maintain accuracy even at midnight low flow rate
- ✓ 4 path transducers for outstanding accuracy
- ✓ Transit-Time method
- ✓ Co-developed with Korea Environment Corporation
- ✓ Patented product (10-1833543)



# Ultrasonic Sewage Pipe Flowmeter Xonic® 100LO



## System Description

It is a new sewage flowmeter that completely overcomes undetectable low-level flow rate and error, which is a chronic problem of conventional doppler sewer pipe, and first developed in the world.

Xonic 100LO measure flow velocity directly with patented 4 path transit-time ultrasonic transducers.

## Application

Xonic 100LO is specially designed for sewage pipe only. It use 4 path transducers to measure flow rate and use level meter to receive level data. Also it can measure partly filled pipes.

## Flow unit specialized for sewage

Sewage flow rate is usually low, thus it is difficult to measure it with conventional doppler. However Xonic 100LO with specially designed flow unit can measure normal flow as well as very low flow at midnight. Also it alerts when sand have precipitated and indicates necessity of maintenance or cleaning.

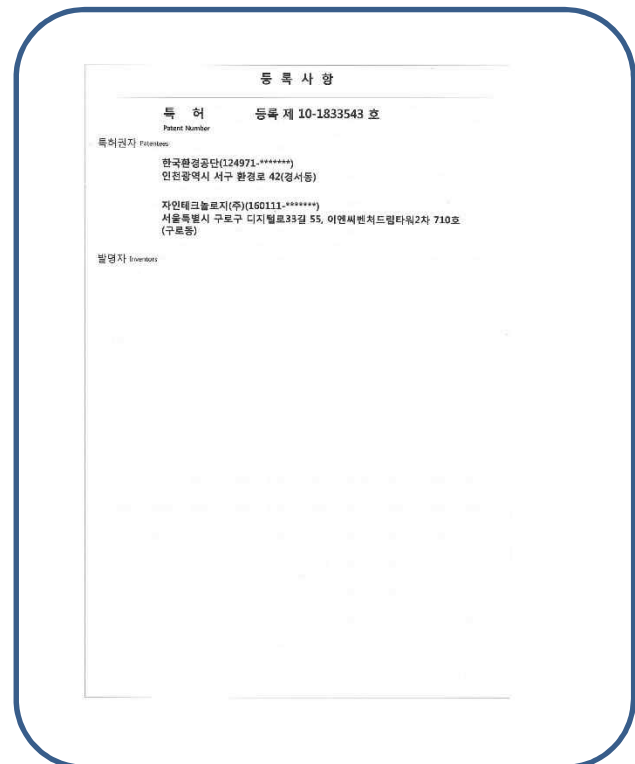
# Ultrasonic Sewage Pipe Flowmeter Xonic® 100LO

## Content of Patent

- 1) Measuring device for low-carbon partly filled sewage pipe that can reduce unnecessary energy consumption by accurate measurement of low flow rate.
- 2) Reducing possibility of measurement error due to piled sand or slurry.
- 3) In case of low flow rate, accurate flow measurement device induces fluid from front part between inducers and stabilizes by reducing flow area.


## Patentee

- Korea Environment Corporation
- Jain Technology Co., Ltd.



# Ultrasonic Sewage Pipe Flowmeter Xonic® 100LO

## Specification

	Velocity	0~10m/sec
	Principle	AR(Anti-Round),4 path
	Accuracy	2.0%
	Data Input	4-20mA (level meter)
	Data Output	4-20mA Relays RS-232C/485 Modbus
	Display	Color Graphic LCD 128*64
	Temperature Range	Flow computer -20~+75°C Transducers 0~+60°C
	Power	AC 110~220V
	Enclosure	IP65
	Transducer	Submersible (IP68)



**Clamp-On Ultrasonic Flowmeter**



**Portable Ultrasonic Flowmeter**



**Ultrasonic Water Meter**